

## Title: Abstract Instructions for Authors: Arial 14pt, bold, centred

Authors<sup>1</sup> and Authors<sup>2</sup>: Arial 10pt, centred

<sup>1</sup> Dept., Organisation, Postal Address, author@domain.com - Email for only one author per institution.

<sup>2</sup> Underline the corresponding author and reference multiple institutions with numbers

### ABSTRACT: Arial 12pt, bold, centred, all capitals

*These instructions give details for Authors preparing their paper using the Microsoft Word Template (IWPT3\_abst.doc). The styles used are those which begin with a #. Do not use any other styles within your paper. Arial 10pt, italic, single line spacing, justified. These instructions give you guidelines for preparing papers for the 3<sup>rd</sup> International Workshop on Process Tomography. Papers should be one page, including references and images.*

#### Notice:

*Abstracts should be sent by email as attached documents to [iwpt3@mech.cst.nihon-u.ac.jp](mailto:iwpt3@mech.cst.nihon-u.ac.jp) by Oct. 1, 2008 and in Microsoft Word File.*

*Please make a file name to [your First name and Last name.doc].*

*If you submit over 2, make the second name to [your First name and Last name-2.doc]*

**Keywords** 4 keywords, Arial 10pt

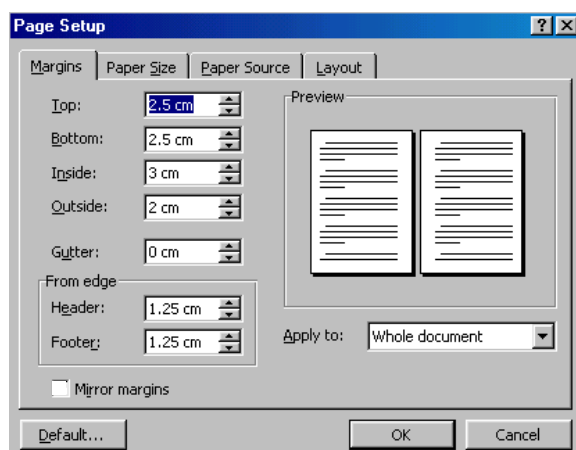


Figure 1: The page setting required: Arial 8pt, bold, centred

## REFERENCES

In the reference section give references in Author order:

KAZANTSEV, I., (1999), *Tomographic Reconstruction Using Ridge Functions*, In Proc: 1st World Congress on Industrial Process Tomography, Buxton, UK, pp. 433-437.

WILLIAMS P.M. AND YORK T.A., (1999), Hardware Implementation of RAM-Based Neural Networks for Tomographic Data Processing, IEE Proc. *Computers and Digital Techniques*, 146, 2, pp.114-118.

XIE, C.G., (1995), Image Reconstruction, In: R.A. WILLIAMS, M.S. BECK, *Process Tomography: Principles, Techniques and Applications*, Butterworth Heinemann, pp. 175-208.